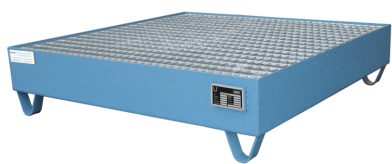


**Model: Collection tray of sheet steel painted for 4 x 200 l-drum**  
**Order number: 1.41.203**

Correct use: Storage equipment and accessories



- square - dim.: 1200 x 1200 x 285 (W x D x H mm) Collection volume: 210 l Sheet steel painted to RAL 5012 lightblue, material strength 3 mm with galvanised removable grating. Ground clearance approx. 100 mm. load 1000 kg suitable for flammable liquids F+ F and water polluting liquids WGK 1-3 Testings: with declaration of conformity (ÜHP) according to StawaR Tested by TÜV

Category:	Collecting trays
Outer width [mm]:	1.200
Outer depth [mm]:	1.200
Outer height [mm]:	285
Net weight [kg]:	87,00