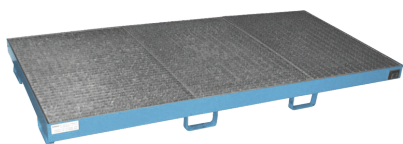


Model: Collection tray of sheet steel painted for 8 x 200 I-drum
Order number: 1.41.208

Correct use: Storage equipment and accessories



Dimensions.: appr. 2700 x 1300 x 205 (WxDxH in mm) Collection volume: 210 l Colour RAL 5012 blue, material strength 3 mm, with galvanised removable grating, skids with 100 mm underclearance, Load: 1600 kg Suitable for flammable liquids F+, F und for water polluting liquids WGK 1-3 Testings: Declaration of conformity (ÜHP) according to StawaR, TÜV-tested

Category:	Collecting trays
Outer width [mm]:	2.700
Outer depth [mm]:	1.300
Outer height [mm]:	205
Net weight [kg]:	194,00