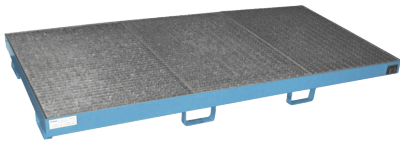


# **Model: Collection tray of sheet steel painted for 8 x 200 I-drum**

## **Order number: 1.41.208**

Correct use: Storage equipment and accessories



Dimensions.: appr. 2700 x 1300 x 205 (WxDxH in mm) Collection volume: 210 l Colour RAL 5012 blue, material strength 3 mm, with galvanised removable grating, skids with 100 mm underclearance, Load: 1600 kg Suitable for flammable liquids F+, F und for water polluting liquids WGK 1-3 Testings: Declaration of conformity (ÜHP) according to StawaR, TÜV-tested

Category: Collecting trays Outer height [mm]: 205, Outer width [mm]: 2.700, Outer depth [mm]: 1.300, Gross weight [kg]: 194,00, Net weight [kg]: 194,00,